



“WAVE EATER EATER”™
Racing Lane Storage Reel
Assembly Instructions
Prod. #: 210300

Please read these instructions before you begin, this will save you time in the long run and possibly prevent difficulty during assembly.

If you need technical assistance, are missing items or need replacement parts please call our Customer Service Dept. at 800-323-4071

Tools you will need to assemble the “Wave Eater Eater”™

- One 7/16” box end wrench.
- One 1/2” box end wrench.
- One 9/16” box end wrench.
- One ratchet with 7/16”, 1/2”, and 9/16” sockets.
- One 5/32” Allen Wrench.
- Soft faced hammer or mallet.

- 1.) Unpack the contents of the cartons and verify that you have received all of the components and fasteners listed on the parts list. (Refer to Sheets #1 and #2)
- 2.) Assemble the two main Frame Sections (Item #2) by inserting the straight ends of each frame into the flared ends of the frame pieces. Align the pre-drilled holes and insert a 3/8-16 x 4-1/2” long Hex Head Bolt (Item #9) into the hole on each side of the frames. Secure the bolt by using two 3/8” Nylock Nuts (Item #11). For now **HAND TIGHTEN** these nuts.
- 3.) Attach each one of the Locking Casters (Item #1) to one of the Caster Plates (Item #13) using the four 5/16-18 x 3/4” Hex Head Bolts, 5/16” Flat Washers, and 5/16” Nylock Nuts (Item #'s 19, 20, & 21).
- 4.) The assembled caster and plate can now be fastened to the frame pieces using two each, 5/16” Moon Head bolts, 5/16” Flat Washers, and 5/16” Nylock Nuts (Item #'s 14, 20, & 21).
- 5.) With the casters secured in place next attach the bolts, which will hold the cross brace tubes. Insert each Hanger Bolt (Item #22) through the caster plate with the flat part of the bolt facing the inside of the frame and place a 3/8” Flat Washer (Item #10), 3/8” Lock Washer (Item #23) and a 3/8-16 Hex Head Nut (Item #24) on each bolt. Snug these up to the caster plate, but just as before **HAND TIGHTEN** these nuts.

6.) The Cross Brace Tubes (Item #3) can now be slid over the flat ends of the bolt (you may need to carefully splay the two halves of the frame apart). Align the holes in the tube with the hole in the bolt and fasten them with a 1/4-20 x 1 1/2" Hex Head Bolt placing a 1/4" Flat Washer between the tube and the bolt head. Secure the bolt with a 1/4" Lock Washer and a 1/4" Hex Head Nut (Item #'s 15, 16, 17 & 18). Next tighten the 3/8" Hex Nuts and as you do, align the tube to the center of the hanger bolt. Slide the Vinyl Caps (Item #25) onto the ends of the bolts.

7.) Slide one of the plastic Stop Collars (Item #7) over one end of the Axle (Item #4) until approximately 2-3/4" of the Axle is sticking out. Loosely tighten the set screws in the stop collar using a 5/32" Allen Wrench. Be careful not to over tighten them as the tapped plastic threads in the collar may strip.

8.) Slide the plastic Drum (Item #5) and Disc (Item #6) assembly over the Axle. Be sure the Discs are orientated properly with the outer edge radius of both facing inward. Slide the other set collar over the opposite end of the axle. Snug the Disc and Drum together and loosely tighten the set screws in the stop collar using a 5/32" Allen Wrench.

9.) Remove the two 3/8-16 x 4-1/2" long Hex Head Bolt (Item #9) from the top of the frame. With a person at each end, lift and place the disc and drum assembly onto the frame. Place support under the assembly at the bottom of both discs with approximately 5+ inches of shimming until the axle tube is resting slightly above the frame holes. Shimming should be solid and parallel to the axis of the axle. Add shimming as needed to keep the weight of the assembly off the frame. Align the pre-drilled holes in both the frame and axle. Fasten the disk and drum assembly to the frame with the 3/8-16 x 4-1/2" long Hex Head Bolt placing a 3/8" Flat Washer between the axle and the bolt head. Secure the bolt with a 3/8" Flat Washer and a 3/8" Nylock Nut (Item #'s 9, 10 & 11).

10.) The disc and drum assembly should be centered on the frame. Make the final adjustments in its placement by loosening the setscrews slightly on both stop collars and sliding the disc and drum to the desired location. Re-tighten the setscrews being careful not to over tighten them as the tapped plastic threads in the collar may strip. Finally, using a soft-faced hammer or mallet tap the plastic Pipe End Caps (Item #8) into the axle ends.

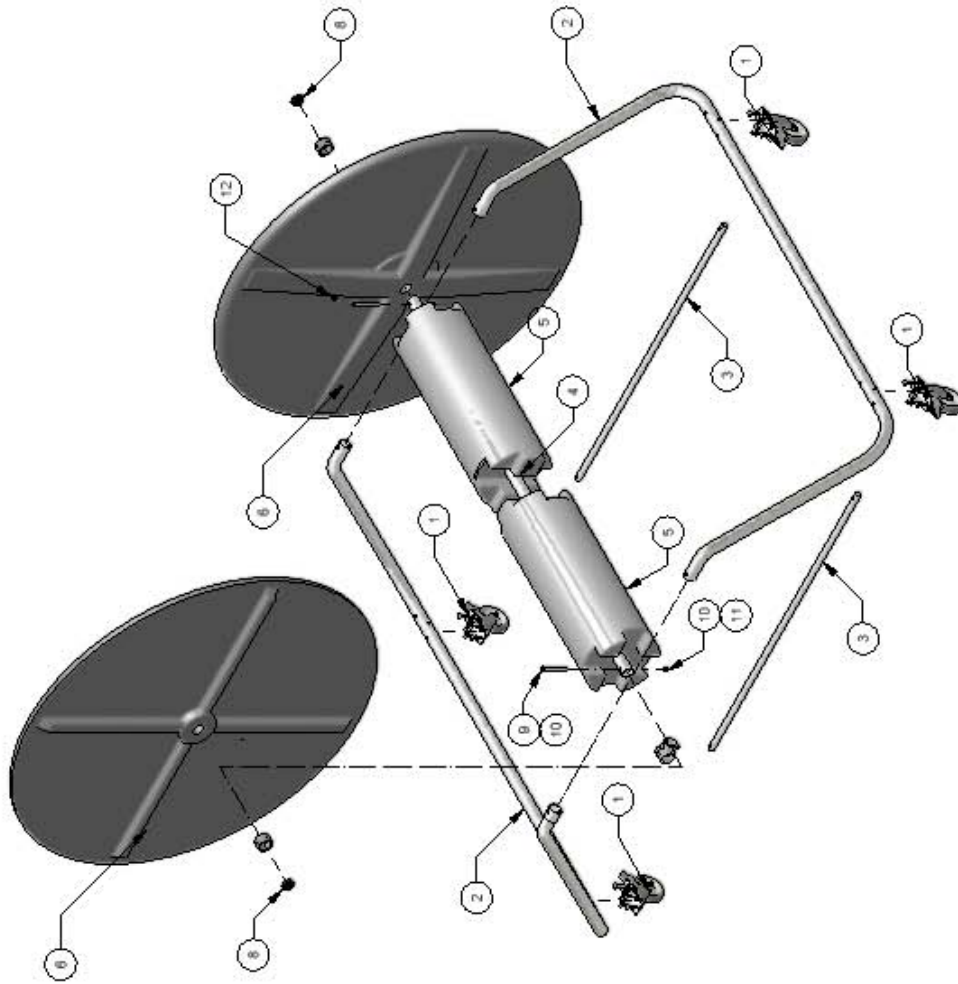
11.) Before moving the "WAVE EATER EATER"™ or loading it with racing lanes check all of the fasteners to ensure they are properly tightened.

Important Note:

When storing racing lanes on the Wave Eater Eater™ storage reel start winding the lanes from the spring end first.

Parts List "Wave Eater Eater" Storage Reel

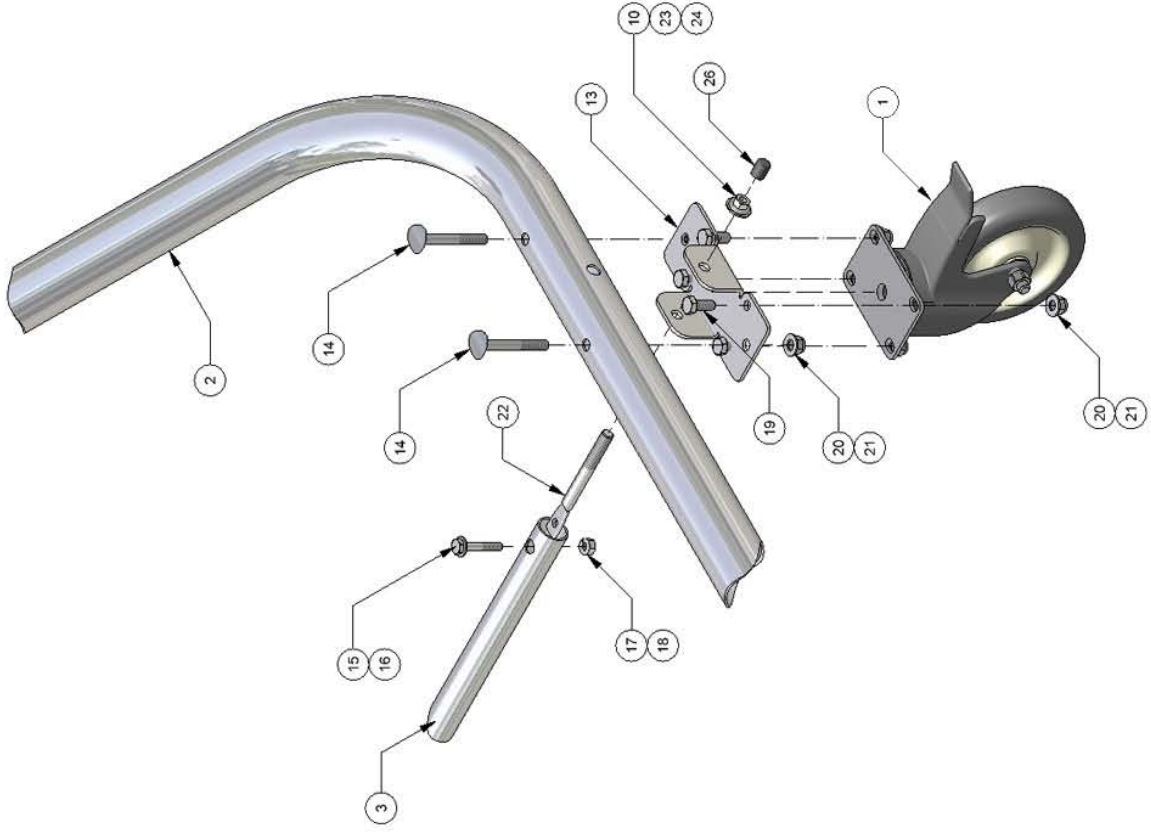
Item	Qty.	Part#	Description
1	4	210307	Caster
2	2	210001FT	Frame Tube
3	2	210002CT	Cross Brace Tube
4	1	210003AX	Axle
5	2	210305	Drum
6	2	210304	Disk
7	2	210309SC	Stop Collar w/Set screws
8	2	210313	Cap for 1.9" O.D. Sch. 5 Pipe
9	2	FA38412H	3/8-16 x 4 1/2" HH Bolt - 18-8 S.S.
10	4	FA38FW	3/8" Flat Washer - 18-8 S.S.
11	2	FA38LN	3/8-16 Nylock Nut
12	1	FA14EB	1/4-20 x 3" Eyebolt w/Hrdw.



"Wave Eater Eater"™ Storage Reel

Prod. # 210300

Parts List "Wave Eater Eater"™ Storage Reel			
Item	Qty.	Part#	Description
1	4	210307	Caster
2	2	210001FT	Frame Tube
3	2	210002CT	Cross Brace Tube
10	4	FA38FW	3/8" Flat Washer - 18-8 S.S.
13	4	210007CP	Caster Plate
14	8	FA516MHB	Moon Head Bolt
15	4	FA14112H	1/4-20 x 1 1/2" HH Bolt - 18-8 S.S.
16	4	FA14FW	1/4" Flat Washer - 18-8 S.S.
17	4	FA14LW	1/4" Lock Washer - 18-8 S.S.
18	4	FA14HN	1/4-20 HH Nut - 18-8 S.S.
19	16	FA51634H	5/16-18 x 3/4" HH Bolt - 18-8 S.S.
20	24	FA516FW	5/16" Flat Washer - 18-8 S.S.
21	24	FA516LN	5/16-18 Nylock Nut - 18-8 S.S.
22	4	FA3840HB	Hanger Bolt
23	4	FA38LW	3/8" Lock Washer - 18-8 S.S.
24	4	FA38HN	3/8-16 HH Nut - 18-8 S.S.
25	4	9753K16	Vinyl Cap



"Wave Eater Eater"™ Storage Reel

Prod. #: 210300